



SAMSUNG® CLP 600 • 650 CARTRIDGE REMANUFACTURING INSTRUCTIONS



SAMSUNG® CLP 600 COLOR LASER PRINTER

TOOLS NEEDED

UniNet Metal Pin Removal tool (#11030) or similar metric screw

Phillips Screwdriver

Flat-head Screwdriver (small and standard)

Pliers

Hook Tool (angled and straight)

SUPPLIES NEEDED

Black toner 150g

Cyan toner 150g

Magenta toner 150g

Yellow toner 150g

Black Smartchip

Cyan Smartchip

Magenta Smartchip

Yellow Smartchip

OPTIONAL SUPPLIES

Doctor blade

Wiper blade



FRONT VIEW



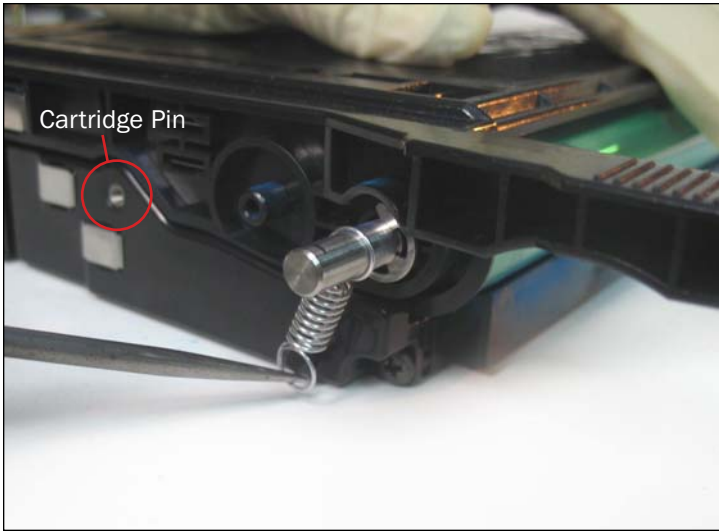
CONTACT-SIDE VIEW



GEAR-SIDE VIEW

www.uninetimaging.com/technical.asp

11124 Washington Blvd., Culver City, California USA 90232 • Ph +1 310 280 9620 • Fx +1 310 280 0533 • techsupport2@uninetimaging.com



SEPARATING THE CARTRIDGE SECTIONS

1. Remove the tension spring that is attached to the contact end plate and drum axle.



REMOVING THE PINS

2. Insert a small metric screw into the cartridge pin. Turn clockwise until the screw has a tight hold on the pin, then pull the pin out.

For best results use the UniNet Pin Extraction Tool (#11030 pictured).



3. Pin removed.



4. Use the same procedure for the opposite pin.

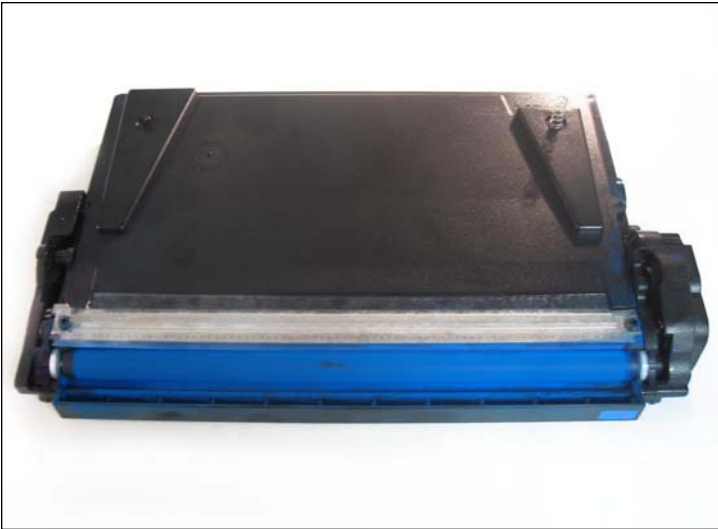
www.uninetimaging.com/technical.asp



5. Pin removed.

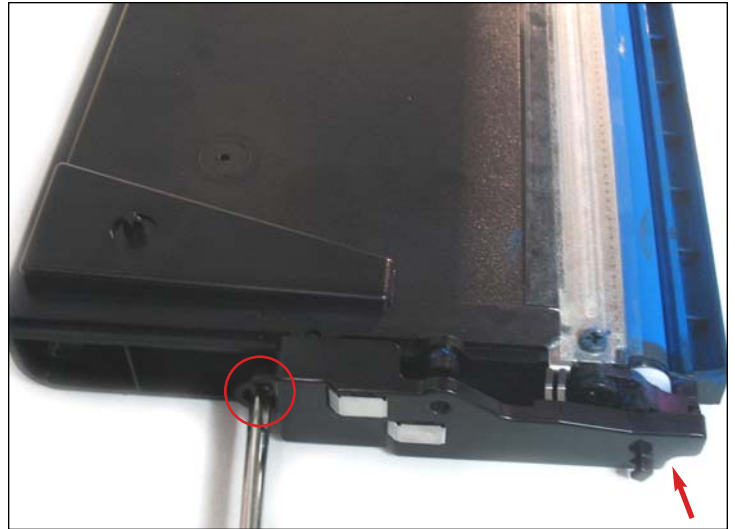


6. Separate the two halves as shown.



DISASSEMBLING THE TONER CARTRIDGE

7. Toner cartridge front view



REMOVING THE CONTACT END PLATE

8. First, remove the end plate by removing the two screws (shown) that hold it in place.

www.uninetimaging.com/technical.asp

11124 Washington Blvd., Culver City, California USA 90232 • Ph +1 310 280 9620 • Fx +1 310 280 0533 • techsupport2@uninetimaging.com

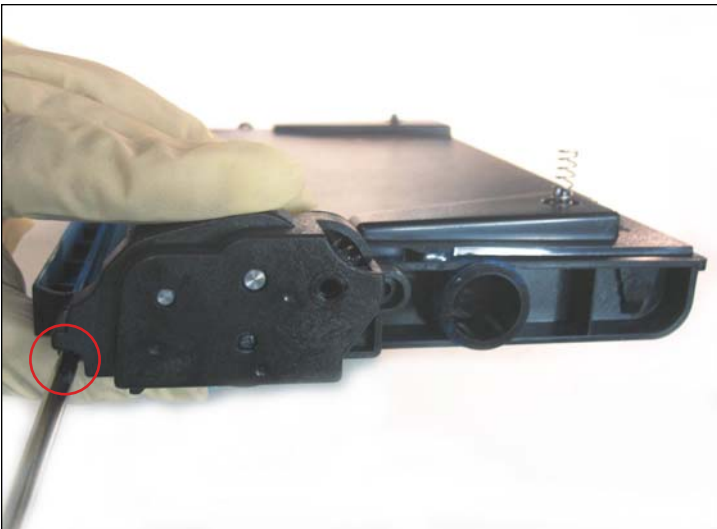


9. End plate removed.



REMOVING THE GEAR-SIDE END PLATE

10. Remove the two screws that hold the end plate in place. This will allow access to the gears inside. Remove the first screw from the area shown.



11. Remove the second screw from the area shown.

NOTES

www.uninetimaging.com/technical.asp

11124 Washington Blvd., Culver City, California USA 90232 • Ph +1 310 280 9620 • Fx +1 310 280 0533 • techsupport2@uninetimaging.com

© 2007 UniNet Imaging Inc. All Trademark names are property of their respective owners. Product brand names mentioned are intended to show compatibility only. UniNet Imaging does not guarantee or warrant downloaded information.



REMOVING THE GEARS

12. Remove the gears shown.

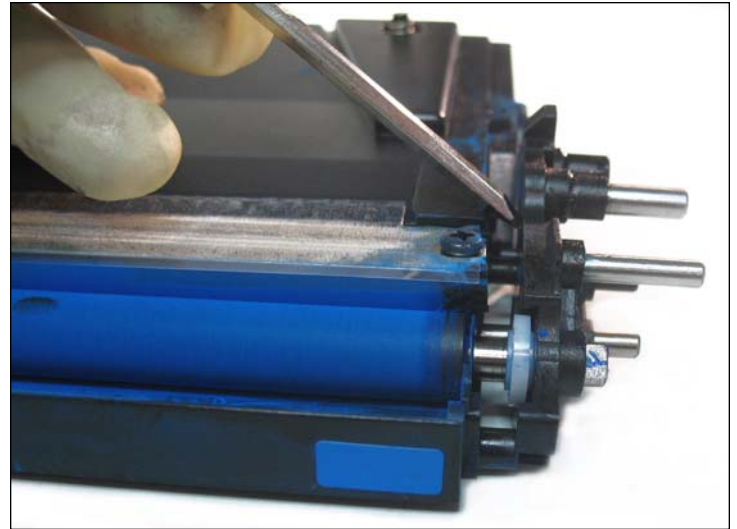


13. Gears removed.



GEAR-SIDE SUPPORT PLATE REMOVAL

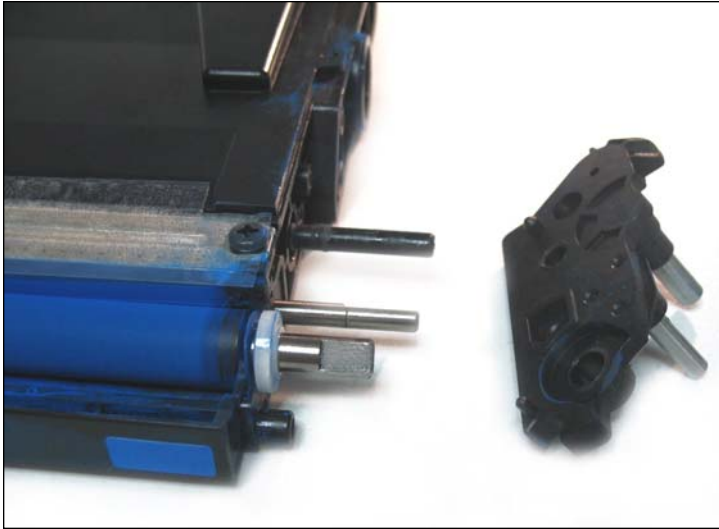
14. Locate the gear-side support plate (shown) and remove the screws that hold it in place.



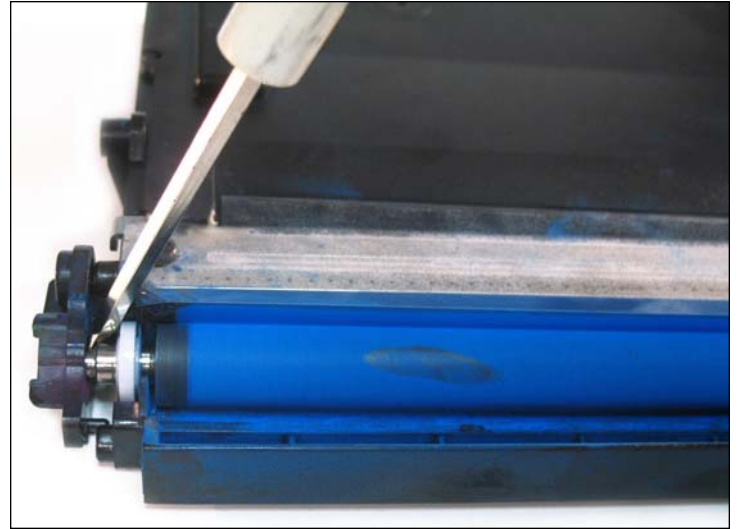
15. Using a flat head screwdriver, pry the loosed plate away from the cartridge to remove it completely.

www.uninetimaging.com/technical.asp

11124 Washington Blvd., Culver City, California USA 90232 • Ph +1 310 280 9620 • Fx +1 310 280 0533 • techsupport2@uninetimaging.com

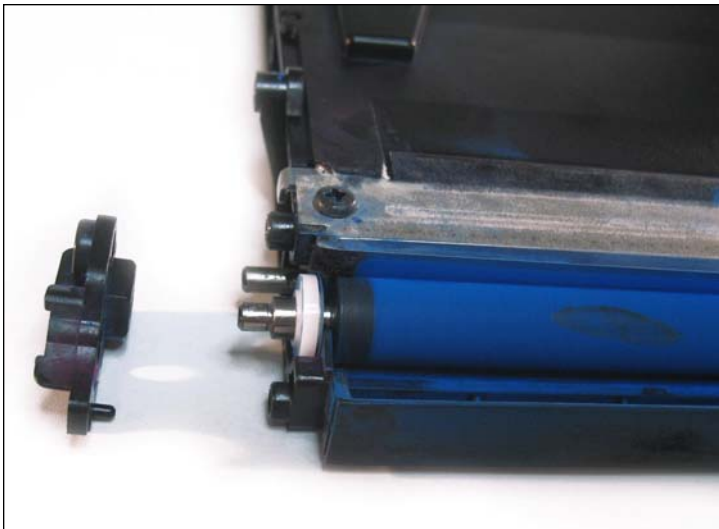


16. Gear-side support plate (shown) removed.



CONTACT-SIDE SUPPORT PLATE REMOVAL

17. Remove the contact-side support plate in the same manner as in the previous steps (14-16).



18. Contact-side support plate (shown) removed.
You are now ready to remove the developer roller.



19. Remove the developer roller as shown.

www.uninetimaging.com/technical.asp

11124 Washington Blvd., Culver City, California USA 90232 • Ph +1 310 280 9620 • Fx +1 310 280 0533 • techsupport2@uninetimaging.com

© 2007 UniNet Imaging Inc. All Trademark names are property of their respective owners. Product brand names mentioned are intended to show compatibility only. UniNet Imaging does not guarantee or warrant downloaded information.



20. Locate the fill plug on the gear-side of the cartridge. Using a pair of pliers, carefully pull it out.

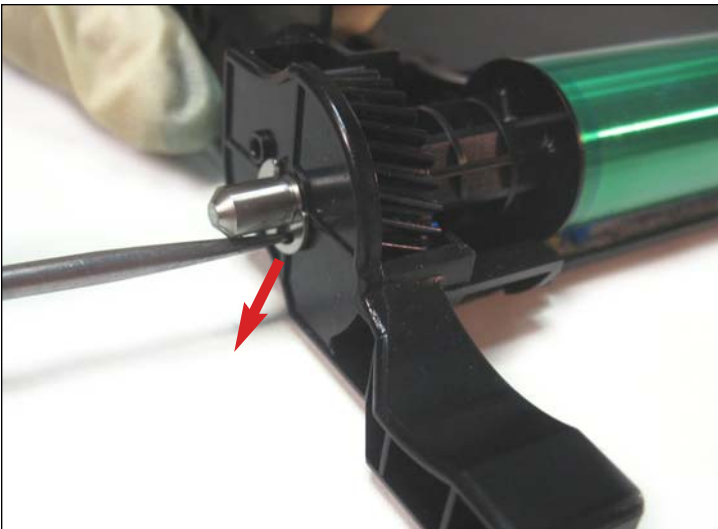
Clean cartridge and components thoroughly using compressed air and refill with new toner.

Reassemble the hopper and set aside.



DISASSEMBLING THE DRUM UNIT

21. Drum unit shown.



UNLOCKING THE OPC DRUM

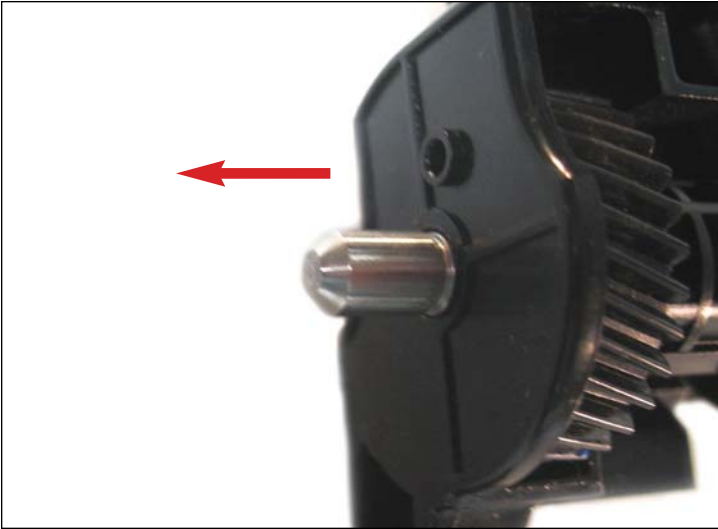
22. Locate the "C"clip (shown) that holds the OPC drum in place on both side. Use a small flat head screwdriver or straight hook tool to draw both "C" clip out.



23. "C" clip (shown) removed.

www.uninetimaging.com/technical.asp

11124 Washington Blvd., Culver City, California USA 90232 • Ph +1 310 280 9620 • Fx +1 310 280 0533 • techsupport2@uninetimaging.com



REMOVING THE DRUM AXLE

24. Slide out the drum axle through the gear-side as shown. Follow through until the axle is completely removed.

NOTE: Pulling out the axle through the opposite (gearless) side would force a gap between the OPC contact and the axle. The end result would be blank pages due to loss of OPC conductivity.



REMOVING THE OPC DRUM

26. Remove the OPC drum as shown.



REMOVING THE PCR

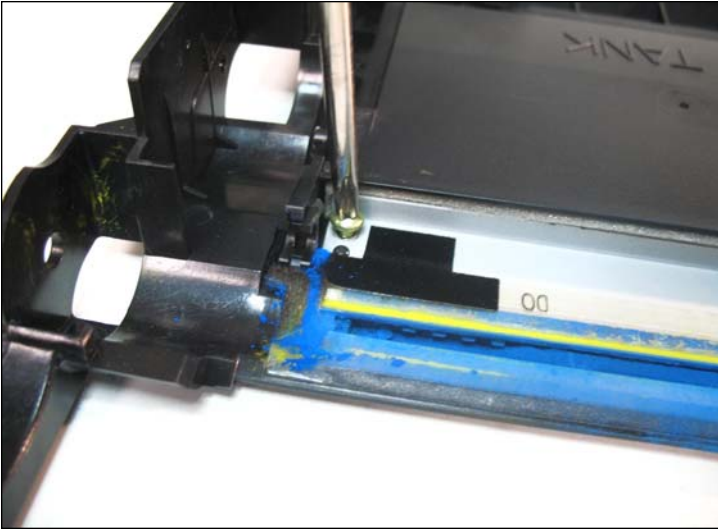
27. Remove as shown.

NOTES

www.uninetimaging.com/technical.asp

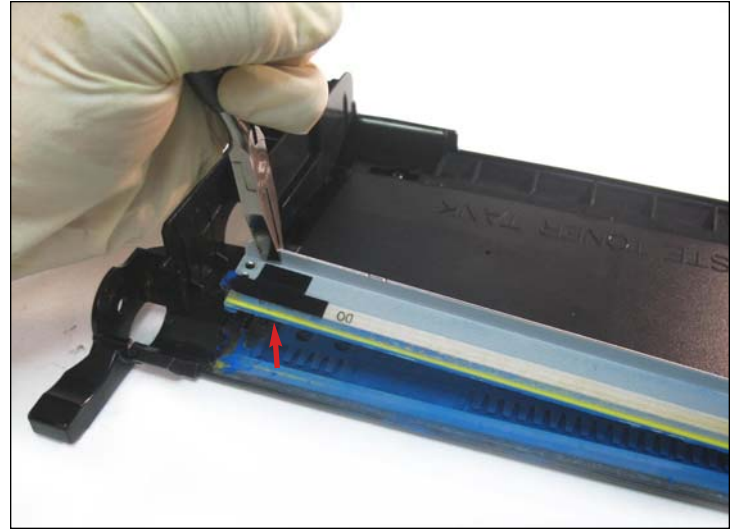
11124 Washington Blvd., Culver City, California USA 90232 • Ph +1 310 280 9620 • Fx +1 310 280 0533 • techsupport2@uninetimaging.com

© 2007 UniNet Imaging Inc. All Trademark names are property of their respective owners. Product brand names mentioned are intended to show compatibility only. UniNet Imaging does not guarantee or warrant downloaded information.

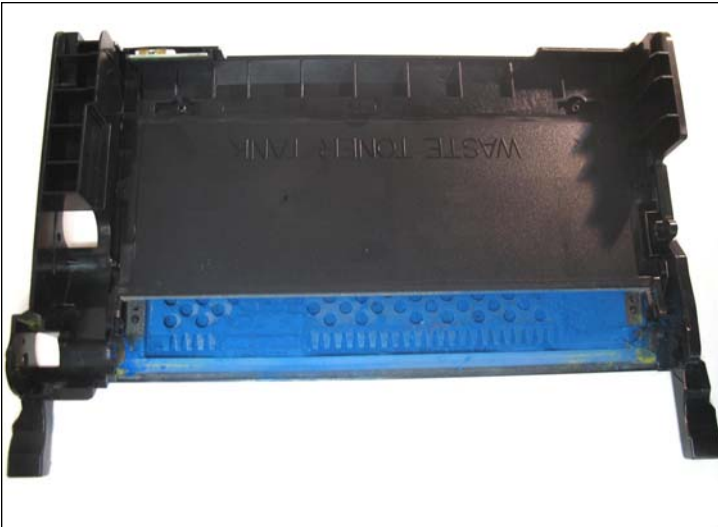


REMOVING THE WIPER BLADE

28. First, remove the two screws from both ends of the wiper blade.



29. Using a pair of pliers, grip and remove the wiper blade as shown.

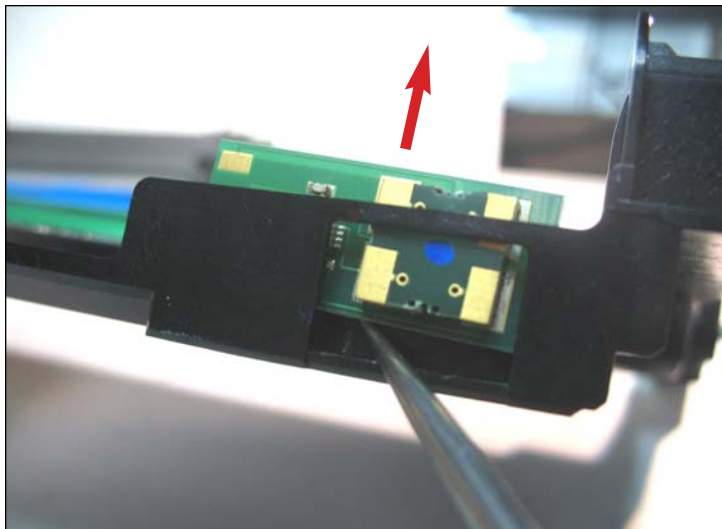


30. Clean thoroughly and reassemble the drum unit.

NOTES

www.uninetimaging.com/technical.asp

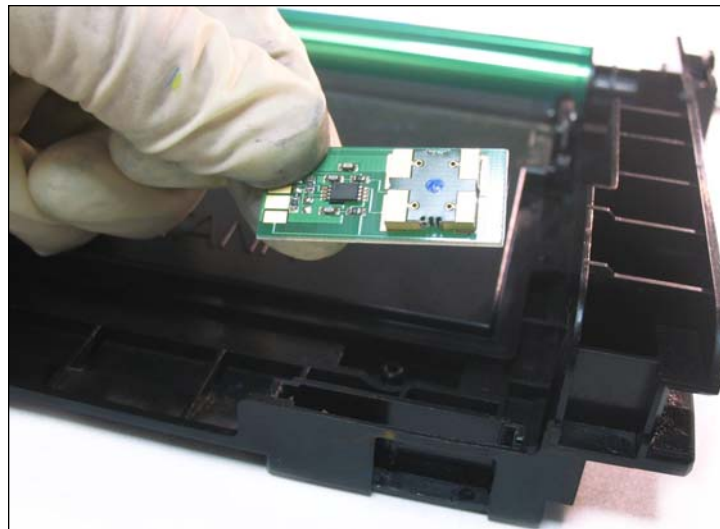
11124 Washington Blvd., Culver City, California USA 90232 • Ph +1 310 280 9620 • Fx +1 310 280 0533 • techsupport2@uninetimaging.com



OEM CHIP REPLACEMENT

32. Just prior to joining the drum unit and toner hopper, you must replace the OEM chip located at the rear of the drum unit.

Using a small flat head screwdriver, pry the chip upward as shown.



33. Remove the OEM chip and replace it with a new after-market one.

Join the cartridge halves and test the cartridge.

NOTES

www.uninetimaging.com/technical.asp

11124 Washington Blvd., Culver City, California USA 90232 • Ph +1 310 280 9620 • Fx +1 310 280 0533 • techsupport2@uninetimaging.com

© 2007 UniNet Imaging Inc. All Trademark names are property of their respective owners. Product brand names mentioned are intended to show compatibility only. UniNet Imaging does not guarantee or warrant downloaded information.