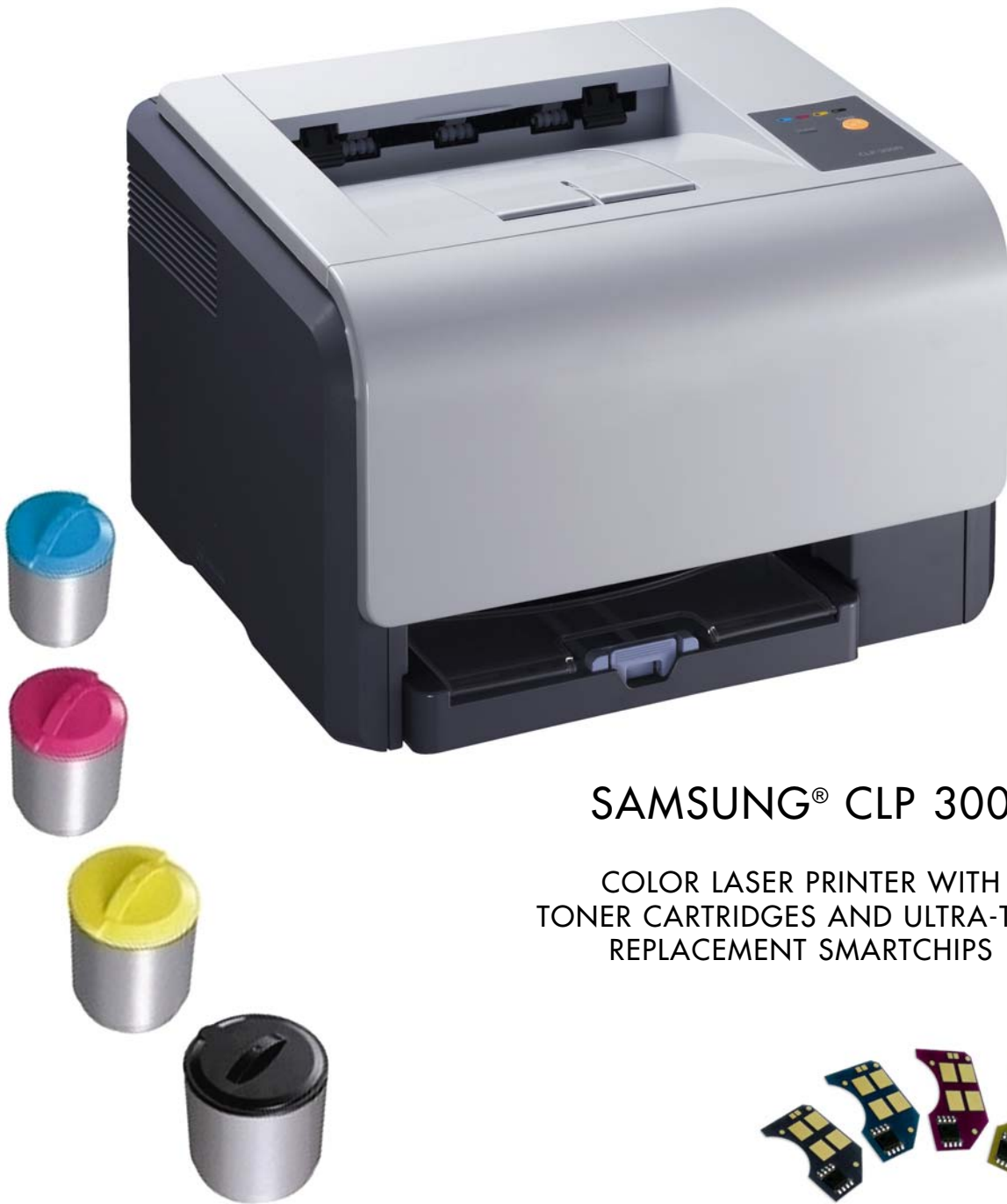


# SAMSUNG® CLP 300 TONER CARTRIDGE REMANUFACTURING INSTRUCTIONS

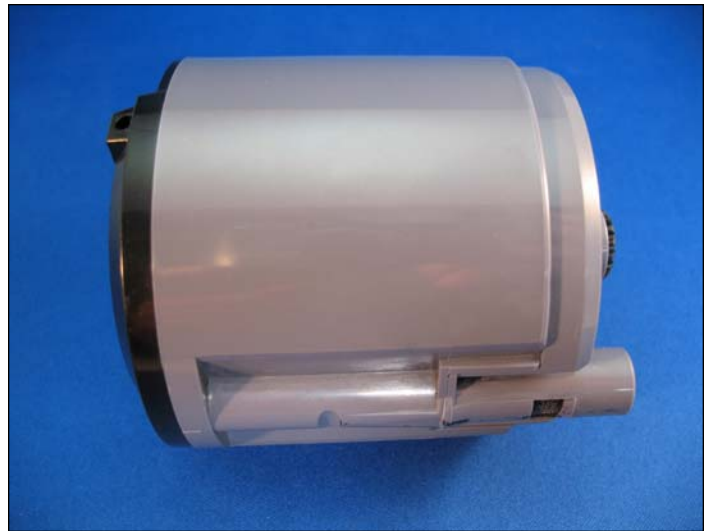


## SAMSUNG® CLP 300

COLOR LASER PRINTER WITH  
TONER CARTRIDGES AND ULTRA-THIN  
REPLACEMENT SMARTCHIPS



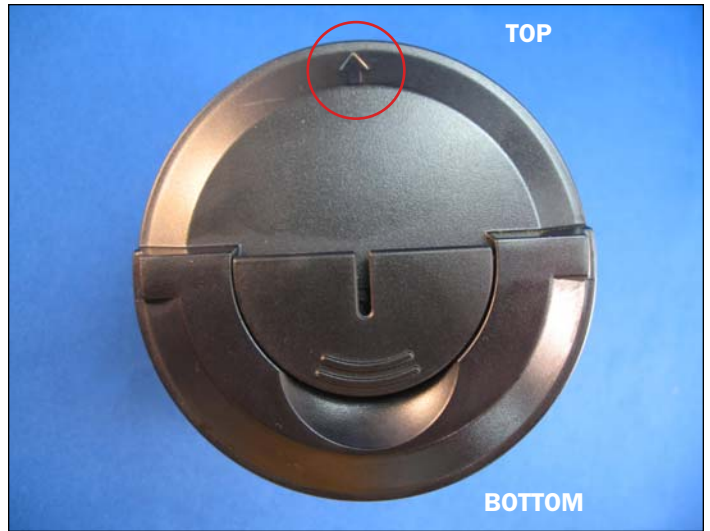
1. Samsung CLP 300 cartridge with front end cap.



2. Side view of cartridge.



3. Gear side of cartridge with OEM chip.



**CARTRIDGE LOADING POSITION**

4. Cartridges when loaded into the printer, are positioned side-ways with the pictured end cap with handles facing out.

The area with the embossed “arrow” pointing upward (shown) is the top of the cartridge.



**BEFORE CLEANING THE CARTRIDGE**

5. In order to clean and fill the cartridge with new toner, we must first create a small hole by drilling through either side. The hole must then be sealed with a fill plug adhesive or sealing tape.

Position the cartridge with the “arrow” side pointing upward. We highly recommend drilling on the left or right side of the cartridge near the middle (shown).



**DRILLING THE CARTRIDGE**

7. Drill a hole through the appropriate side of the cartridge using a 1/2” drill bit.



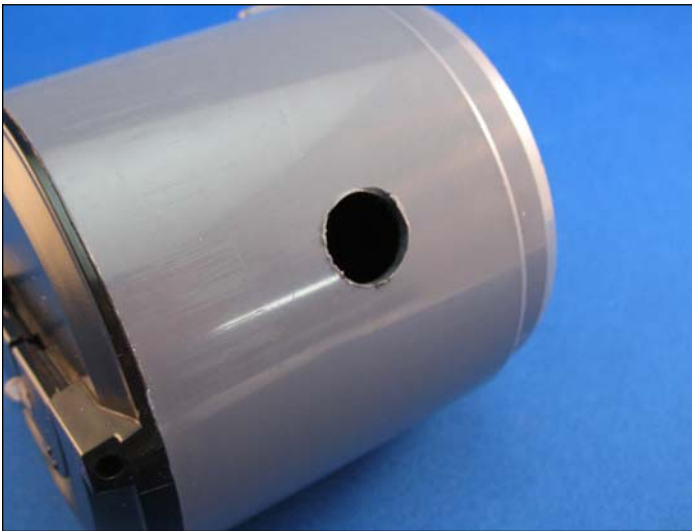
6. **NOTE:** DO NOT drill or place any adhesive near the top area of the cartridge. Placing an adhesive in this area just below the housing wall can cause friction between the two surfaces, resulting in the seal rubbing off and leaking toner.

**SOLDERING AS AN ALTERNATIVE**

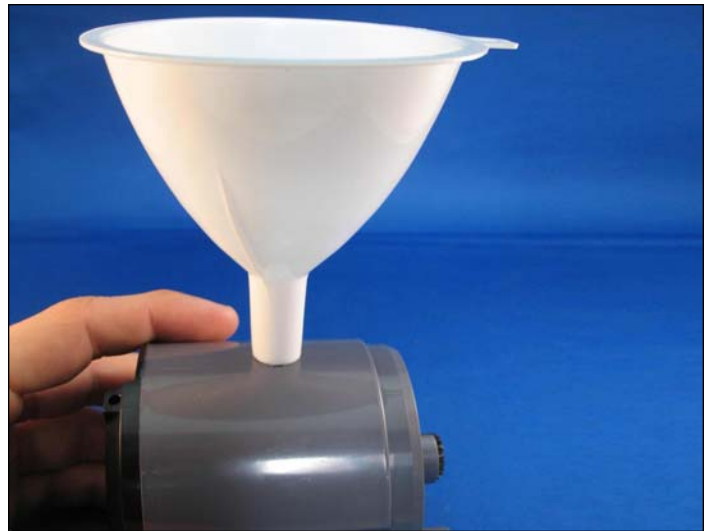
A soldering tool can also be used to create a fill hole. In most cases this procedure can help prevent excess plastic residue from entering the toner hopper. Take note that this will not eliminate the risk of residue.

There are small, inexpensive low-wattage soldering irons available that have screw-on tips. If you take a copper water pipe end cap and drill a small hole in the center, you can then screw it to the end of the soldering iron. The caps come in both 1/2” and 3/4” sizes.

If the iron is too hot for the plastic you might get a small lip around the edge, but that can easily be shaved off with a razor blade. You have to be careful not to get the shavings inside the hole, but that’s easy to prevent. You can also file the edge of the cap with a metal file to slightly taper the cutting edge. That gives a cleaner hole.



8. Clean the inside of the cartridge thoroughly using compressed air or a vacuum. With a half -inch hole, it would be much easier to just vacuum it out and is much less messy. We always recommend using compressed air, but in tight situations like this, it's best to vacuum. A vacuum will also be better at getting any plastic shavings that may have fallen inside.



**FILLING THE CARTRIDGE**

9. Insert a funnel through the hole.



10. Be sure to shake the toner bottle well before opening. Pour the appropriate amount of toner via the funnel.



**SEALING THE HOLE**

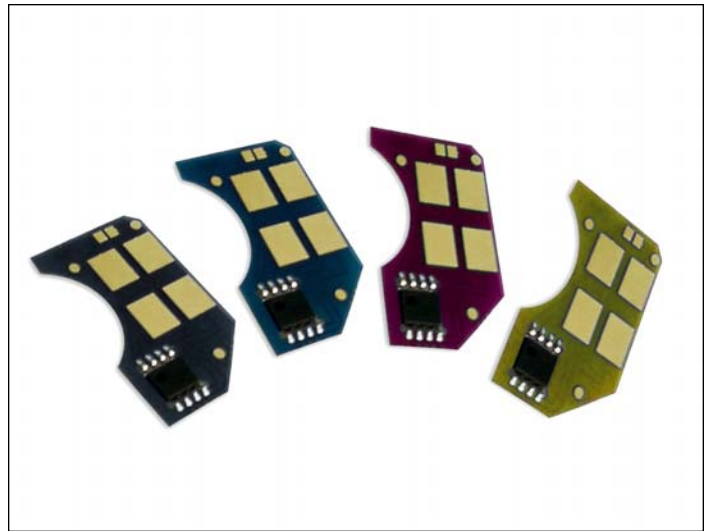
11. The next step is covering the hole using an adhesive hopper fill plug (shown) or sealing tape. Make sure you have a tight seal around the hole to prevent any toner from leaking out.





**COVERING THE OEM CHIP**

12. **NOTE:** Do not attempt to remove the OEM chip, as it is fused into the cartridge. You will simply need to place an ultra-thin replacement chip over the original.



13. Ultra-thin C/M/Y/K replacement smartchips shown.



14. Peel off the strip (shown) to expose the adhesive backing on the reverse side of the ultra-thin chip.



15. Apply the new chip over the OEM as shown.

Remanufacturing complete.